

CERTIFICATE OF CONFORMITY

No. : HX250302090678

Applicant : Yiwu Sailong E-commerce Co., Ltd.

Address : 1st Floor, Unit 3, Building 30, Xihe 2nd District, Houzhai Street, Yiwu City, Zhejiang Province

Manufacturer : Yiwu Sailong E-commerce Co., Ltd.

Address : 1st Floor, Unit 3, Building 30, Xihe 2nd District, Houzhai Street, Yiwu City, Zhejiang Province

Product : Tattoo Needle

Models : 1203RL, 1005RL, 1007RL, 1011RL, 1015RL, 1207RS, 1211RS, 1214RS, 1205RL, 1207RL, 1209RL, 1207M1, 1211M1, 1211RM, 1011RM, 1013RM, 1201RL, 1211RL, 1214RL, 1218RL, 1001RL, 1003RL, 0801RL, 0803RL, 0805RL, 0807RL, 1203RS, 1205RS, 1209RS, 1205RM, 1207RM, 1209RM, 1213RM, 1215RM, 1217RM, 1221RM, 1223RM, 1005RM, 1007RM, 1009RM, 1015RM, 1017RM, 1021RM, 1023RM, 1205M1, 1209M1, 1213M1, 1215M1, 1217M1, 1221M1, 1223M1

Trademark : N/A

Test Standard(s) : IEC 62321-5: 2013, IEC 62321-4:2013+AMD1:2017, IEC 62321-6: 2015, IEC 62321-7-2: 2017, IEC 62321-8: 2017.

The EUT described above has been examined by us with the listed standards and found in compliance with the Council CE Directive 2011/65/EU & (EU)2015/863. It is possible to use CE marking to demonstrate the compliance with the CE Directive.

The test data obtained and the report issued by laboratories other than HX are provided by the applicant to us for data consolidation purpose. The report shall not be reproduced in part without written approval of us. It is only valid in connection with the test report number: HX250302090678.



Mar. 24, 2025

Shenzhen HX Detect Certification Co., Ltd.

206, Building 3A, Yintian Industrial Zone, Yantian Community, Xixiang Street, Bao'an District,
Shenzhen

HOTLINE:0755-29116082 Email: huaxunprc@163.com Http://www.hx-lab.com

TEST REPORT

Applicant : Yiwu Sailong E-commerce Co., Ltd.
Address : 1st Floor, Unit 3, Building 30, Xihe 2nd District, Houzhai Street, Yiwu City, Zhejiang Province
Manufacturer : Yiwu Sailong E-commerce Co., Ltd.
Address : 1st Floor, Unit 3, Building 30, Xihe 2nd District, Houzhai Street, Yiwu City, Zhejiang Province

The submitted sample and sample information was/were submitted and identified by/on the behalf of the client

Sample name : Tattoo Needle
1203RL, 1005RL, 1007RL, 1011RL, 1015RL, 1207RS, 1211RS, 1214RS, 1205RL, 1207RL, 1209RL, 1207M1, 1211M1, 1211RM, 1011RM, 1013RM, 1201RL, 1211RL, 1214RL, 1218RL, 1001RL, 1003RL, 0801RL,
Sample Model : 0803RL, 0805RL, 0807RL, 1203RS, 1205RS, 1209RS, 1205RM, 1207RM, 1209RM, 1213RM, 1215RM, 1217RM, 1221RM, 1223RM, 1005RM, 1007RM, 1009RM, 1015RM, 1017RM, 1021RM, 1023RM, 1205M1, 1209M1, 1213M1, 1215M1, 1217M1, 1221M1, 1223M1
Model Difference : All above models are identical in schematic, structure and critical components except for different appearance and color
Trademark : N/A

TEST INFORMATION

Date of Receipt : 2025-03-18
Date of Test : 2025-03-18 to 2025-03-21
Date of Issue : 2025-03-24
Test Requested : Selected test(s) as requested by client.
Test Method : Please refer to next page(s).
Test Results : Please refer to next page(s).

Conclusion : Based on the performed tests on submitted sample(s), the results of Lead, Mercury, Cadmium, Hexavalent chromium, Polybrominated biphenyls (PBBs), Polybrominated diphenyl ethers (PBDEs), Phthalates(DBP, BBP, DEHP, DIBP) comply with the limits as set by CE Directive (EU)2015/863 amending Annex II to Directive 2011/65/EU.

Amy Xie

Test/Witness Engineer



Approved & Authorized



Test Result:Test Part Description

Product name	Description
Tattoo Needle	01 Black silicone 02 Green plastic 03 White plastic 04 Metal needle

Remarks

- (1) 1 mg/kg = 1 ppm = 0.0001%
- (2) MDL = Method Detection Limit
- (3) ND = Not Detected (< MDL)
- (4) "-" = Not Regulated

CE Directive 2011/65/EU .

Test Method :

- (1) With reference to IEC 62321-5: 2013, determination of Lead by ICP-OES.
- (2) With reference to IEC 62321-5: 2013, determination of Cadmium by ICP-OES.
- (3) With reference to IEC 62321-4:2013+AMD1:2017, determination of Mercury by ICP-OES.
- (4) With reference to IEC 62321-7-2: 2017 and/ or determination of Total Chromium by IEC 62321-5: 2013 Colorimetric Method using UV-Vis.
- (5) With reference to IEC 62321-6: 2015, determination of PBBs and PBDEs by GC-MS.

Test Items	Results				MDL	Limit
	01	02	03	04		
Lead (Pb)	N.D.	N.D.	N.D.	N.D.	10mg/Kg	1000mg/Kg
Cadmium (Cd)	N.D.	N.D.	N.D.	N.D.	10mg/Kg	100mg/Kg
Mercury (Hg)	N.D.	N.D.	N.D.	N.D.	10mg/Kg	1000mg/Kg
Hexavalent Chromium (CrVI)	N.D.	N.D.	N.D.	N.D.	10mg/Kg	1000mg/Kg

Test Items	Results			MDL	Limit
	01	02	03		
Sum of PBBs					
Monobromobiphenyl	N.D.	N.D.	N.D.	50mg/Kg	1000mg/Kg
Dibromobiphenyl	N.D.	N.D.	N.D.	50mg/Kg	
Tribromobiphenyl	N.D.	N.D.	N.D.	50mg/Kg	
Tetrabromobiphenyl	N.D.	N.D.	N.D.	50mg/Kg	
Pentabromobiphenyl	N.D.	N.D.	N.D.	50mg/Kg	
Hexabromobiphenyl	N.D.	N.D.	N.D.	50mg/Kg	
Heptabromobiphenyl	N.D.	N.D.	N.D.	50mg/Kg	
Octabromobiphenyl	N.D.	N.D.	N.D.	50mg/Kg	
Nonabromobiphenyl	N.D.	N.D.	N.D.	50mg/Kg	
Decabromobiphenyl	N.D.	N.D.	N.D.	50mg/Kg	
Sum of PBDEs					
Monobromodiphenyl ether	N.D.	N.D.	N.D.	50mg/Kg	1000mg/Kg
Dibromodiphenyl ether	N.D.	N.D.	N.D.	50mg/Kg	
Tribromodiphenyl ether	N.D.	N.D.	N.D.	50mg/Kg	
Tetrabromodiphenyl ether	N.D.	N.D.	N.D.	50mg/Kg	
Pentabromodiphenyl ether	N.D.	N.D.	N.D.	50mg/Kg	
Hexabromodiphenyl ether	N.D.	N.D.	N.D.	50mg/Kg	
Heptabromodiphenyl ether	N.D.	N.D.	N.D.	50mg/Kg	
Octabromodiphenyl ether	N.D.	N.D.	N.D.	50mg/Kg	
Nonabromodiphenyl ether	N.D.	N.D.	N.D.	50mg/Kg	
Decabromodiphenyl ether	N.D.	N.D.	N.D.	50mg/Kg	

Notes:

(1) The maximum permissible limit is quoted from the directive 2011/65/EU, Annex II.

Phthalate

Test Method : Determination of phthalates by GC-MS based on IEC 62321-8: 2017.

Test Items	Results			MDL	Limit
	01	02	03		
Dibutyl Phthalate (DBP) CAS#: 84-74-2	N.D.	N.D.	N.D.	50mg/Kg	1000mg/Kg
Benzylbutyl Phthalate (BBP) CAS#: 85-68-7	N.D.	N.D.	N.D.	50mg/Kg	1000mg/Kg
Bis(2-ethylhexyl) Phthalate (DEHP) CAS#: 117-81-7	N.D.	N.D.	N.D.	50mg/Kg	1000mg/Kg
Diisobutyl Phthalate (DIBP) CAS#: 84-69-5	N.D.	N.D.	N.D.	50mg/Kg	1000mg/Kg

Notes :

The maximum permissible limit is quoted from CE Directive (EU)2015/863. IEC62321 series is equivalent to EN62321 series :

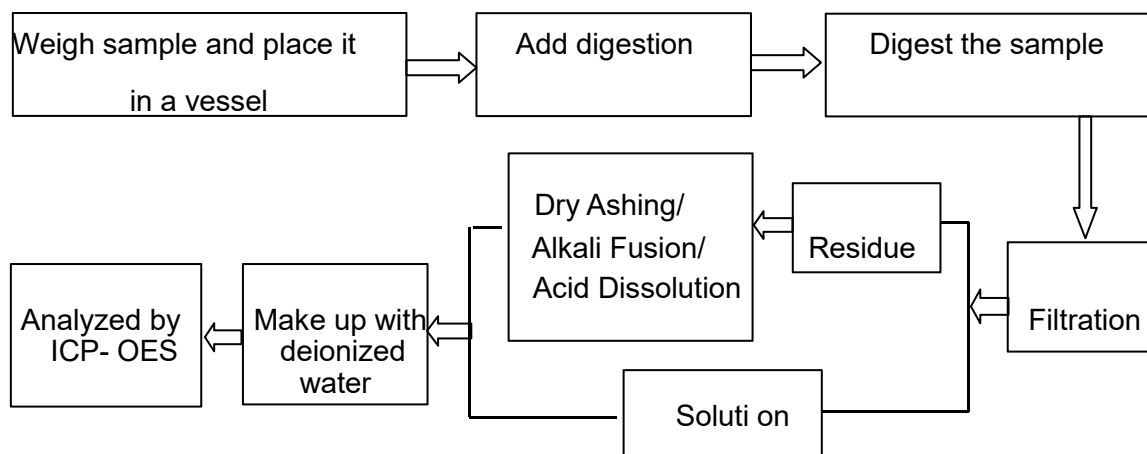
(1) Bis (2-ethylhexyl) phthalate (DEHP), Butyl benzyl phthalate (BBP), and Dibutyl phthalate (DBP) are considered as a priority for risk evaluation and substance restriction.

(2) Bis (2-ethylhexyl) phthalate (DEHP), Butyl benzyl phthalate (BBP), Dibutyl phthalate (DBP) and Diisobutyl Phthalates (DIBP) have been adopted in the draft of Commission Delegated Directive amending Annex II to Directive 2011/65/EU of the European Parliament, and the regulatory limit of each restricted substances should be 0.1%.

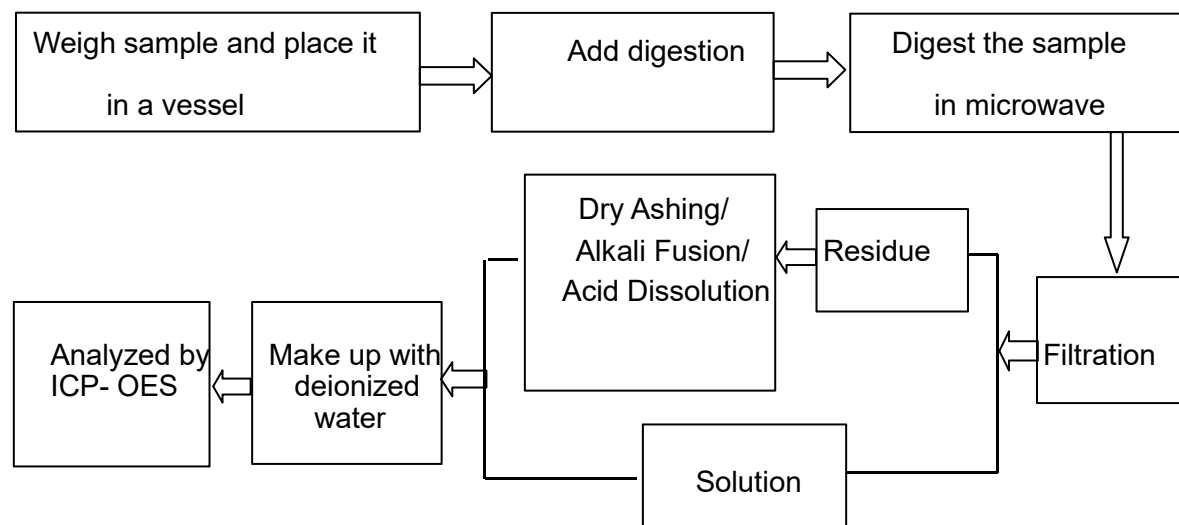
ATTACHMENTS

CE Testing Flow Chart

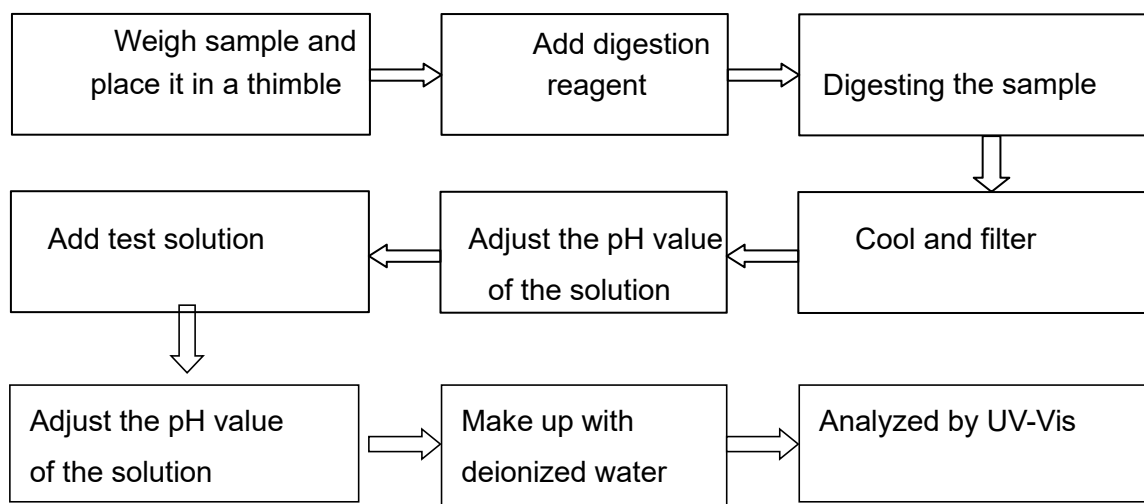
1. Test for Cd/Pb Content



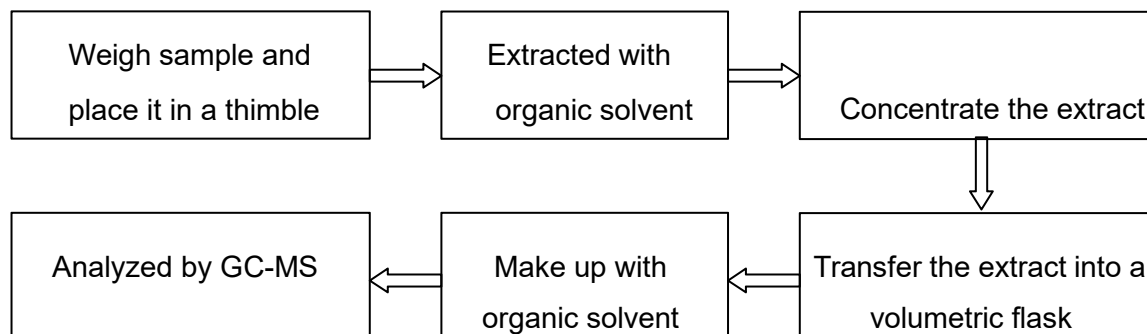
2. Test for Hg Content



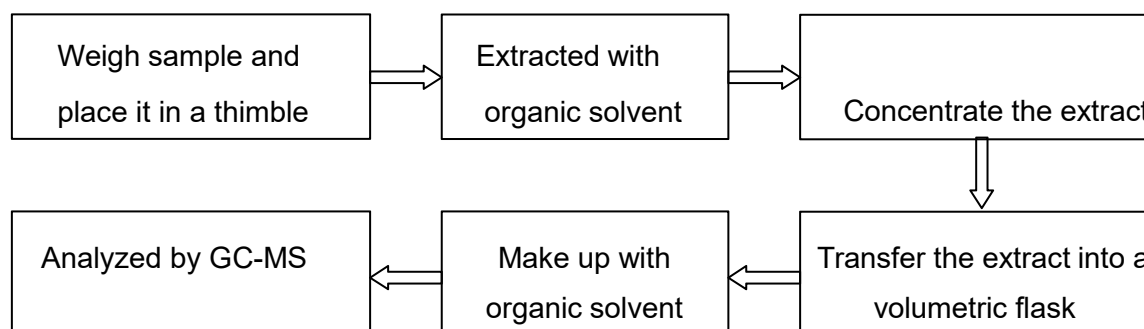
3. Test for Chromium (VI) Content Nonmetallic material



4. Test for Polybrominated Biphenyls (PBBs), Polybrominated Diphenyl Ethers (PBDEs)



5. Test for DBP, BBP, DEHP, DIBP Content



Sample photo:

Photo 1 Appearance of EUT

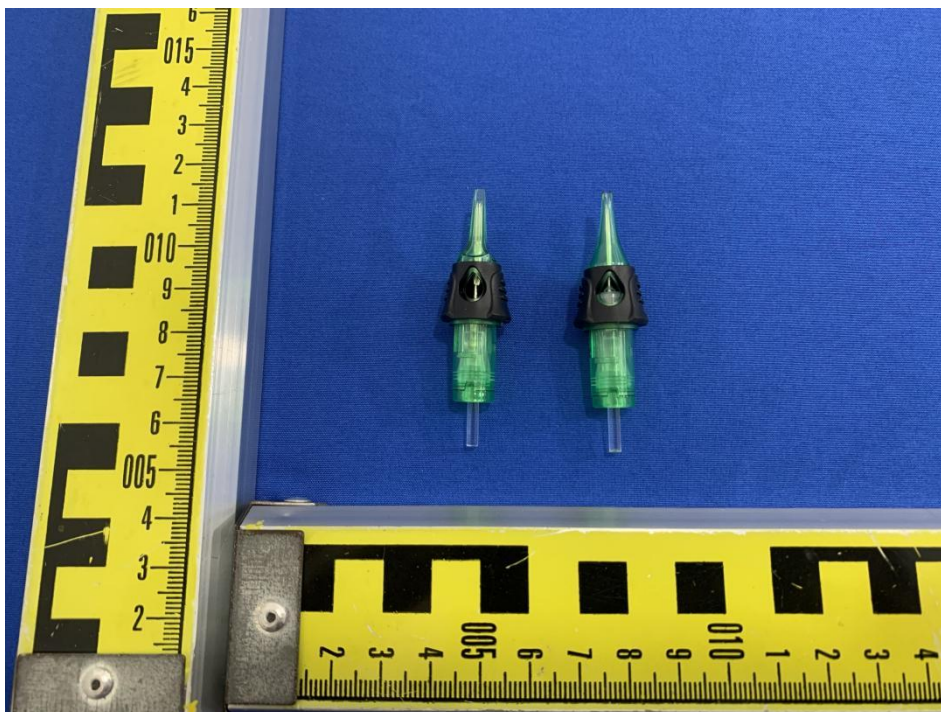
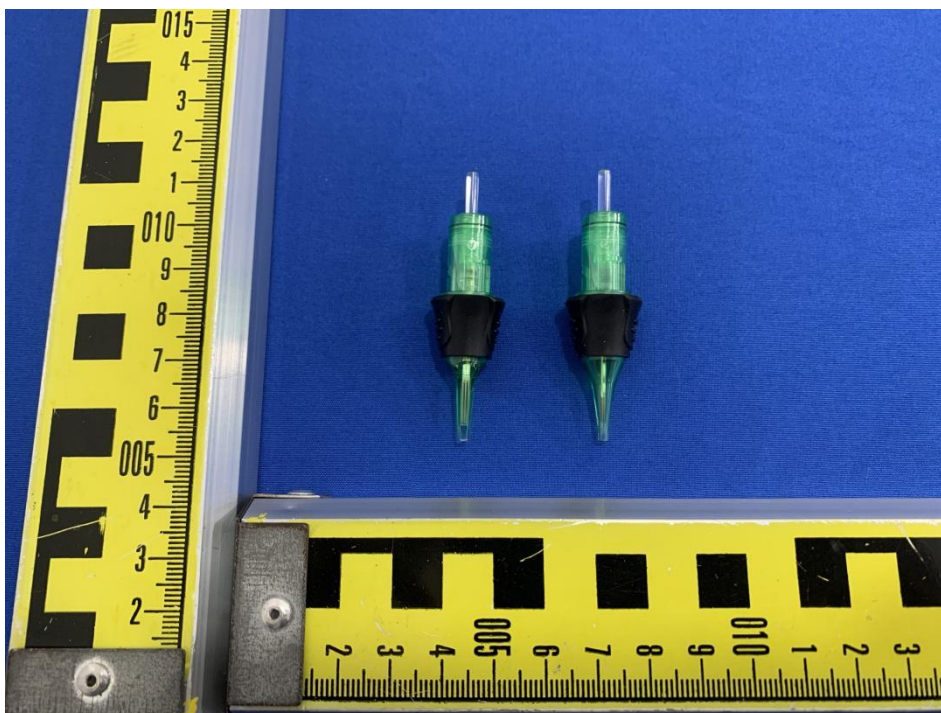


Photo 2 Appearance of EUT



.....End of Report.....